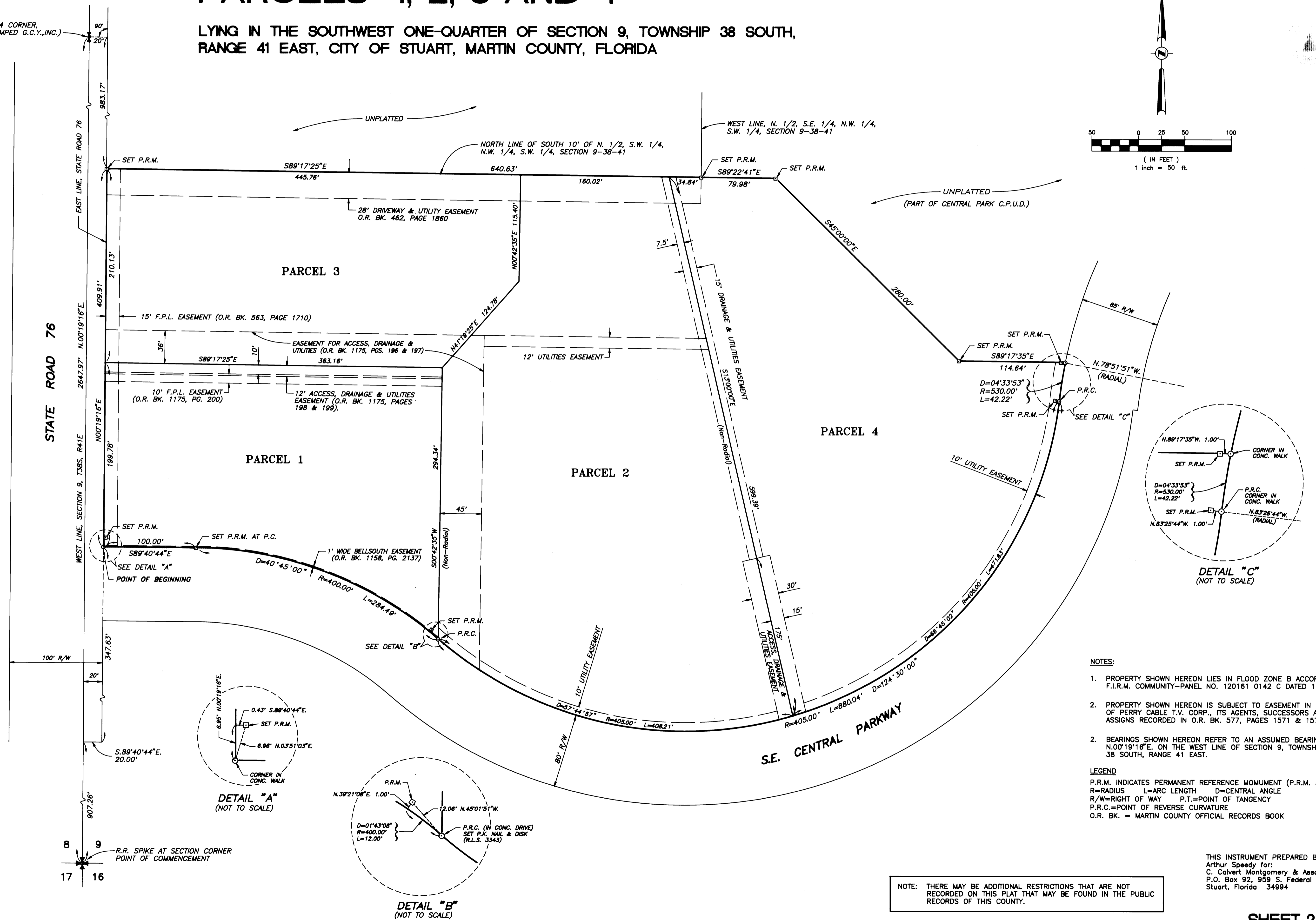


CENTRAL PARK SUBDIVISION PLAT, PARCELS 1, 2, 3 AND 4

LYING IN THE SOUTHWEST ONE-QUARTER OF SECTION 9, TOWNSHIP 38 SOUTH,
RANGE 41 EAST, CITY OF STUART, MARTIN COUNTY, FLORIDA

This Plat was filed for
record in Plat BK 14, pg.
24, Martin County, Florida,
Public Records, this 31 day
of January, 1997.

R.R. SPIKE AT WEST 1/4 CORNER,
SECTION 9-38-41 (STAMPED G.C.Y., INC.)



NOTES:

- PROPERTY SHOWN HEREON LIES IN FLOOD ZONE B ACCORDING TO F.I.R.M. COMMUNITY-PANEL NO. 120161 0142 C DATED 1-5-1984.
- PROPERTY SHOWN HEREON IS SUBJECT TO EASEMENT IN FAVOR OF PERRY CABLE T.V. CORP., ITS AGENTS, SUCCESSORS AND ASSIGNS RECORDED IN O.R. BK. 577, PAGES 1571 & 1572.
- BEARINGS SHOWN HEREON REFER TO AN ASSUMED BEARING OF N.00°19'16"E. ON THE WEST LINE OF SECTION 9, TOWNSHIP 38 SOUTH, RANGE 41 EAST.

LEGEND
P.R.M. INDICATES PERMANENT REFERENCE MONUMENT (P.R.M. 3343)
R=RADIUS L=ARC LENGTH D=CENTRAL ANGLE
R/W=RIGHT OF WAY P.T.=POINT OF TANGENCY
P.R.C.=POINT OF REVERSE CURVATURE
O.R. BK. = MARTIN COUNTY OFFICIAL RECORDS BOOK

NOTE: THERE MAY BE ADDITIONAL RESTRICTIONS THAT ARE NOT RECORDED ON THIS PLAT THAT MAY BE FOUND IN THE PUBLIC RECORDS OF THIS COUNTY.

THIS INSTRUMENT PREPARED BY:
Arthur Speedy for:
C. Calvert Montgomery & Associates, inc.
P.O. Box 92, 959 S. Federal Highway
Stuart, Florida 34994